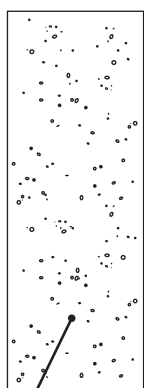


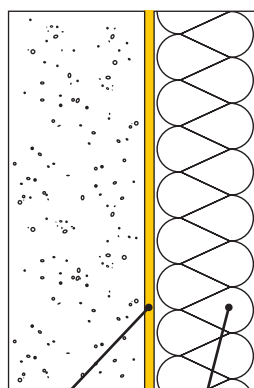
B&B - Istruzioni di posa della pietra su isolamenti a cappotto

1) Muro grezzo portante



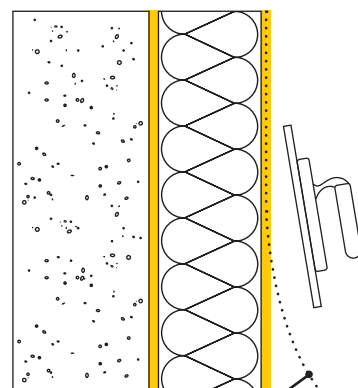
Laterizio
Calcestruzzo
Calcestruzzo alleggerito

2) Incollaggio pannelli isolanti



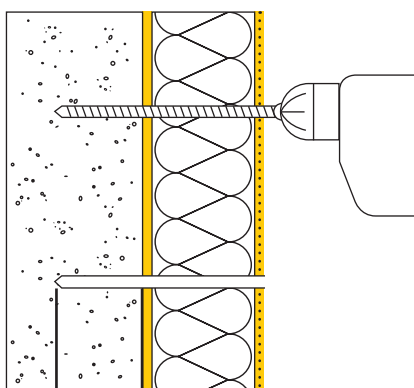
Colla Pannello isolante

3) Rasatura e posa della rete in fibra di vetro



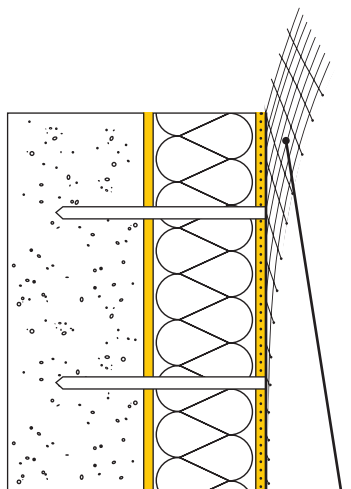
Rete in fibra di vetro

4) Foratura per ancoraggio Zincorete 2,5



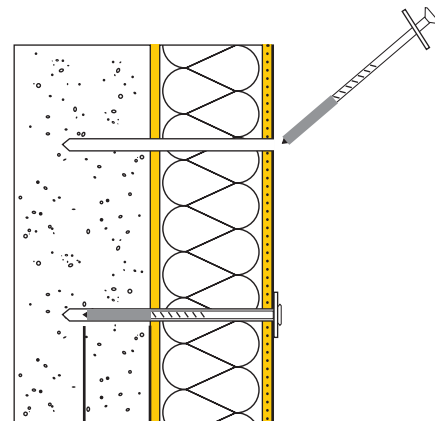
7 cm
minimo

5) Applicazione Zincorete 2,5



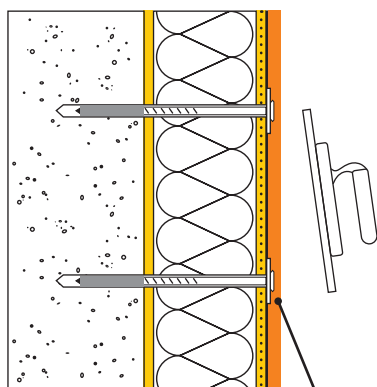
Zincorete 2,5

6) Fissaggio Zincorete al muro solido con idonei tasselli



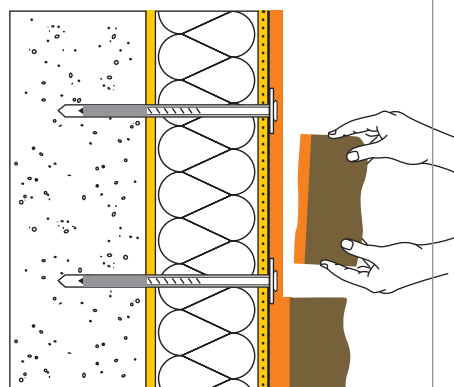
6 cm
minimo

7) Rasatura del supporto mediante colla Speciale B&B



Colla Speciale B&B

8) Posa della pietra con doppia spalmatura di colla (muro e pezzo da incollare)



9) Stuccatura finale in caso di posa con fuga

